



FAIRTRADE AND THE CLIMATE CRISIS

**CHOOSE THE WORLD
YOU WANT**

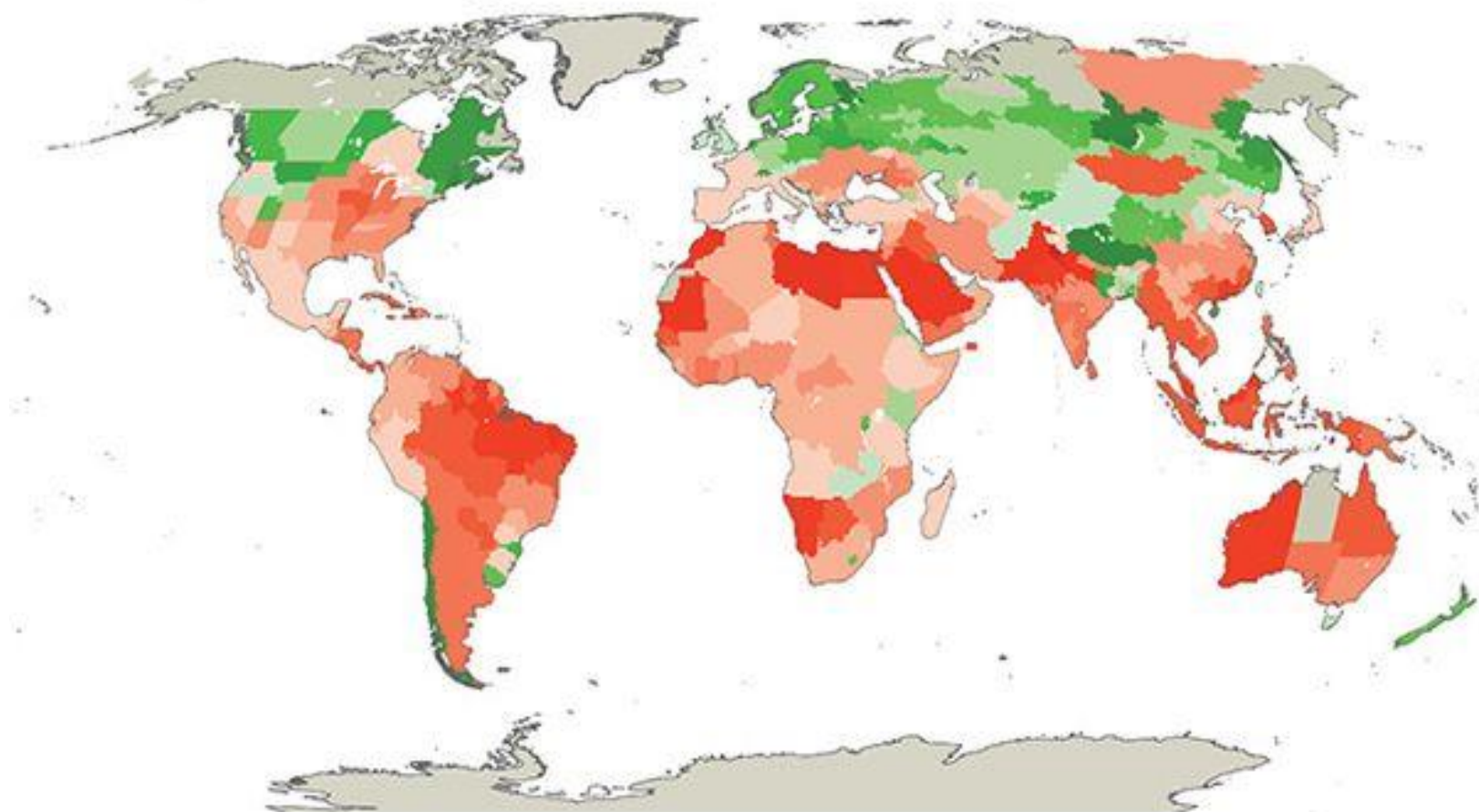
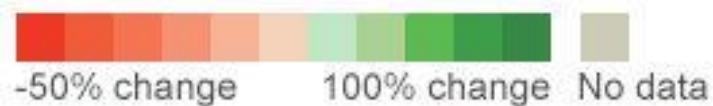


FAIRTRADE



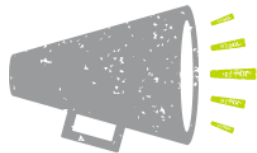
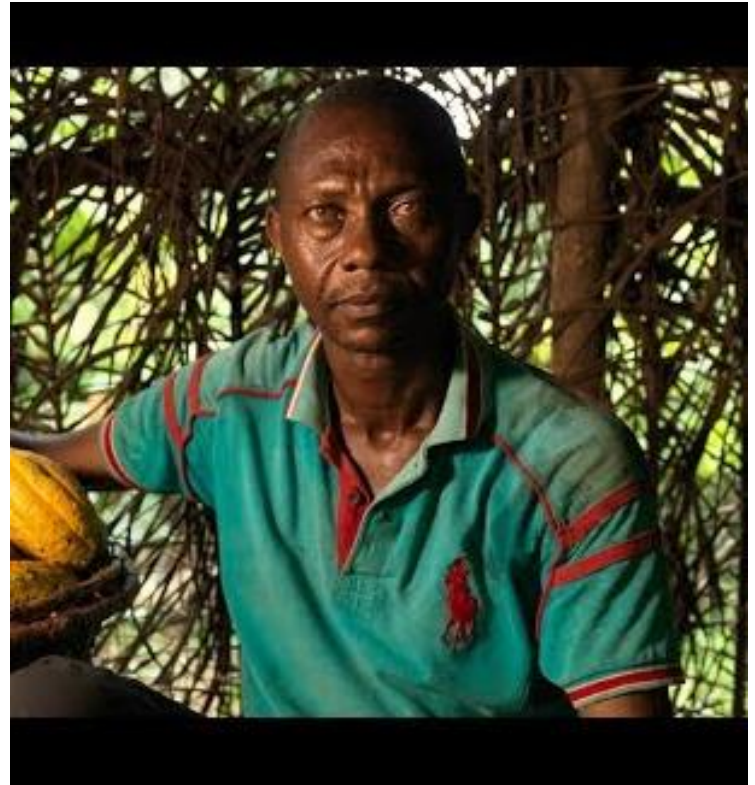
WHAT DO WE MEAN BY 'CLIMATE CRISIS'?

Estimated impact of +3 degrees C change on crop yields by 2050



Source: World resources institute

**'CLIMATE CHANGE IS A GLOBAL
ISSUE. WE, THE FARMERS,
HAVE TO DEAL WITH ITS
CONSEQUENCES EVERY DAY.'**



**WHAT IMPACT MIGHT THE CLIMATE CRISIS
HAVE ON FARMERS IN THESE REGIONS?**



COFEE LEAF RUST IN PERU



FAIRTRADE



**CHOOSE THE WORLD
YOU WANT**



FAIRTRADE

**50% OF LAND USED FOR
COFFEE COULD BE UNUSABLE
BY 2050**

BLACK POD DISEASE IN WEST AFRICA



FAIRTRADE



WATCH 'HOW DOES FAIRTRADE TACKLE THE CLIMATE CRISIS?'



**CHOOSE
THE WORLD
YOU WANT**



FAIRTRADE

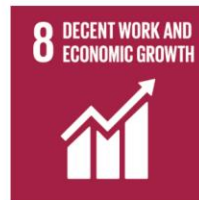
CHOOSE THE WORLD
YOU WANT



FAIRTRADE



SUSTAINABLE DEVELOPMENT GOALS



SUSTAINABLE DEVELOPMENT GOAL 13



FAIRTRADE

13 CLIMATE
ACTION

